



412SX21-T



Actual product appearance may vary.

SX Series Subminiature Basic Switch, Single Pole Double Throw (SPDT), 125 Vac, 1 A, Pin Plunger Actuator, Solder Termination

Features

- Long operating life
- Elongated mounting hole for easier, more accurate mounting
- Choice of actuation (plunger, as well as a variety of integral and auxiliary actuators)
- Choice of electrical termination (solder, quick connect, PCB)
- Choice of operating characteristics
- Optional series constructions available (gold contacts for low energy switching, bifurcated gold contacts for maximum reliability, power load switching capability to 7 A)
- MIL-PFR-8805 qualified listings available

Potential Applications

- Aerospace
- Appliances
- Vending machines
- Timing devices
- Office equipment
- Computer/business equipment
- Test instruments
- Medical/dental equipment
- Communications equipment
- HVAC equipment
- Manually operated devices
- Valves

Description

MICRO SWITCH™ SX Series subminiature basic switches are used for simple or precision on/off application needs. They are small, precision snap-action switches that are ideal where savings in space and weight are important.

Product Specifications

Switch Type	Subminiature 8,89 mm H x 5,08 mm W x 12,7 mm L [0.35 in H x 0.20 in W x 0.5 in L]
Sealed	No
Ampere Rating	1 A
Circuitry	Single Pole Double Throw (SPDT)
Actuator	Pin Plunger
Termination	Solder
Operating Temperature Range	-53 °C to 205 °C [-65 °F to 400 °F]
Voltage	125 Vac
Approvals	CSA, UL
Contact Type	Gold
Operating Force (O.F.)	1,39 N [5.0 oz] max.

Release Force (R.F.)	0,28 N [1.0 oz] min.
Pretravel (P.T.)	0,5 mm [0.020 in] max.
Overtravel (O.T.)	0,1 mm [0.004 in] min.
Differential Travel (D.T.)	0,08 mm [0.003 in] max.
Operating Position (O.P.)	8,13 mm \pm 0,38 mm [0.320 in \pm 0.015 in]
Housing Material	High Temperature Phenolic
High Temperature	204 °C [400 °F]
CE mark	61058-1
UL File #	E12252
CSA File #	LR41372
Agency Approvals and Standards	1054
Mounting Screw Size	22,1 mm [0.087 in]
Mounting Centers	4,83 mm [0.19 in]
Maximum Tightening Torque	0,22 N m [2.0 in lb]
Weight	1,36 g [0.003 lb]
Package Height	8,89 mm [0.35 in]
Package Width	5,0 mm [0.20 in]
Package Length	12,7 mm [0.50 in]
Recommended For	low energy load applications, high temperature
Comment	Turret type solder terminals.
Availability	Global
UNSPSC Code	30211905
UNSPSC Commodity	30211905 Snap switches
Series Name	SX

MICRO SWITCH

FREERPORT ILLINOIS, U.S.A
A DIVISION OF HONEYWELL
FED. MFG. CODE 91929

SWITCH-BASIC

CATALOG LISTING

412SX21-T

PRODUCT CODE

VDX1221

REPLACES X77978-SX

412SX21-T

PAGE 1 OF 1

RELEASE NO. PR-12213

M

DRAWING NUMBER

5

ISSUE

CHECK

AK

CHECK

22/4

15 JUN 83

CHECK

22/4

15 JUN 83

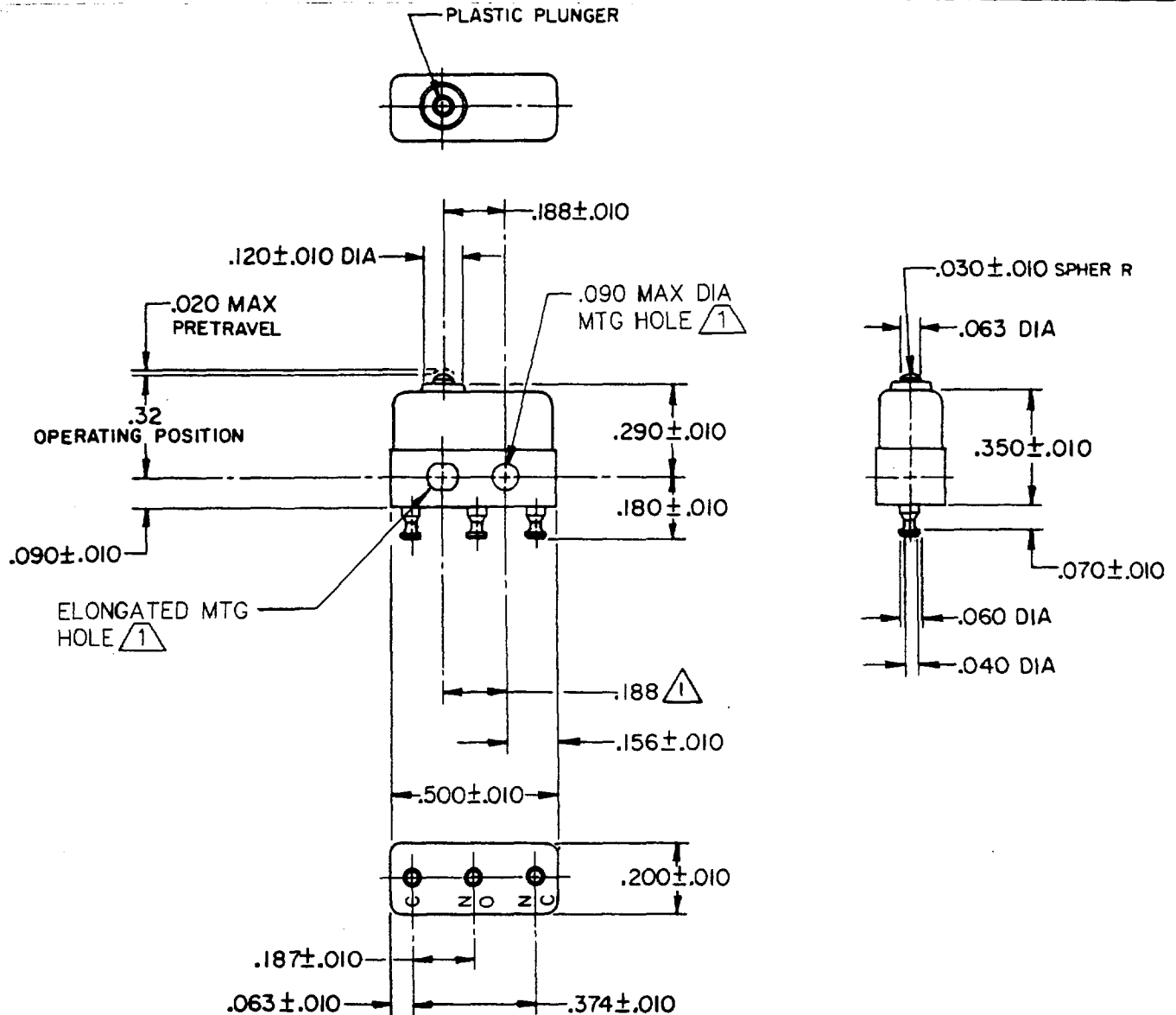
CHECK

22/4

15 JUN 83

CHECK

22/4

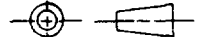


NOTES

- ① MOUNTING HOLES WILL ACCEPT PINS OR SCREWS OF .087 MAX DIA ON .188 ± .002 CENTERS
- 2 - TERMINALS ARE PLATED FOR SOLDERING
- 3 - SWITCH WILL WITHSTAND TEMPERATURE OF 400°F
- 4 - MOVABLE CONTACT MATERIAL - 24K SOLID GOLD OVERLAY
- 5 - STATIONARY CONTACT MATERIAL - GOLD ALLOY

THIS DRAWING COVERS A PROPRIETARY ITEM AND IS THE PROPERTY OF MICRO SWITCH, A DIVISION OF HONEYWELL. THIS DRAWING IS NOT TO BE COPIED OR USED WITHOUT THE APPROVAL OF MICRO SWITCH.

THIRD ANGLE PROJECTION



CHARACTERISTICS

OPERATING FORCE ----- 5 OZ MAX

RELEASE FORCE ----- 1 OZ MIN

DIFFERENTIAL TRAVEL ----- .003 MAX

OVERTRAVEL ----- .004 MIN

ELECTRICAL DATA

CONTACT ARRANGEMENT
S P D T

30 VOLTS DC RATING

INDUCTIVE ----- SEA LEVEL ----- 0.5 AMP
50,000 FT ----- 0.5 AMP

RESISTIVE ----- SEA LEVEL ----- 1 AMP
50,000 FT ----- 1 AMP

MAXIMUM INRUSH ----- 2 AMP

SCALE 2:1

DO NOT SCALE PRINT

TOLERANCES

APPLY TO DESIGN UNITS. CONVERSIONS ARE ONLY FOR REFERENCE. UNLESS NOTED, TOLERANCES ARE 2

	DIM. mm	TOL. mm/in	DIM. in	TOL. mm/in
NO PLACES	X	1/04	X X	0.81/05
ONE PLACE	X,X	0.41/018	X X X	0.381/018
TWO PLACES	X,XX	0.157/008	X X X X	0.157/008
THREE PLACES	X,XXX		X X X X X	0.157/008
ANGLES				

DESIGN UNITS SI METRIC US CUSTOMARY

WEIGHT .003 LB MAX

APPROVALS
KEMA, CE
UL, CSA

1A 250V ~ T125 25E3
1A 125 VAC BRAND L22J

FORMTEK
FO-52848-A
DRAWN